

NOTES ON THE *PEPINENSIS* GROUP OF THE  
CRAB SPIDER GENUS *EBO* (ARANEAE: THOMISIDAE)\*

BY NORMAN I. PLATNICK

Museum of Comparative Zoology  
Cambridge, Mass.

Through the courtesy of Mr. Donald J. Buckle, I have recently had the opportunity to examine a series of crab spiders from Saskatchewan representing a new species of *Ebo* (*Ebo*). As this genus has recently been revised, an isolated description of the new species seemed warranted.

The Saskatchewan specimens are most closely allied to *Ebo pepinensis* Gertsch, and will key out to that species in the published key (Sauer and Platnick, 1972, p. 37), which should be emended as follows:

- 10a. Carapace pale yellow with scattered dark circular markings; legs pale yellow, without dark fleckings; embolus short (1972, Figs. 13, 14); spermathecae as in 1972, Fig. 20; known only from the south central states .....  
..... *punctatus* Sauer and Platnick
- 10b. Carapace orange-brown with dark fleckings; legs usually with dark fleckings; embolus long (Figs. 1, 4); spermathecae as in Figs. 3, 6 ..... II
- 11a. Embolus broadly curved, middle loop of duct far from descending loop (Fig. 4); retrolateral tibial apophysis broad, serrate (Fig. 5); spermathecae separated by their width (Fig. 6); widely distributed ..... *pepinensis* Gertsch
- 11b. Embolus distinctly angular, middle loop of duct near descending loop (Fig. 1); retrolateral tibial apophysis long, narrow, not serrate (Fig. 2); spermathecae separated by less than half their width (Fig. 3); known only from Saskatchewan ..... *bucklei* n. sp.

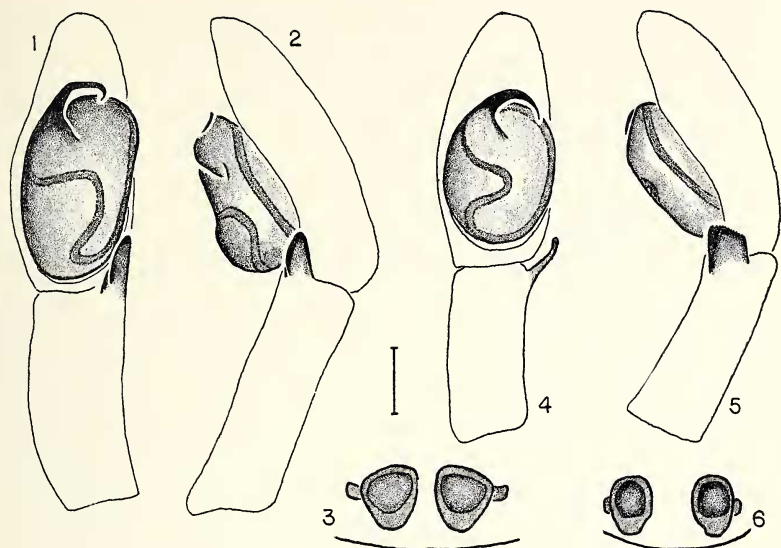
***Ebo bucklei* n. sp.**

Figs. 1-3

TYPES. Holotype male, allotype female from Saskatchewan (5 mi. NE of Saskatoon, 6-13 July 1967, E. Gorin) deposited in the Museum of Comparative Zoology. Twenty-two male and nine female paratypes from the same locality, various dates.

---

\*This investigation was supported in part by Public Health Service Grant A1-01944.



Figs. 1-3. *Ebo bucklei* n. sp. 1. Male, left palpus, ventral view. 2. Retrolateral view. 3. Female, spermathecae, dorsal view (fertilization tubes omitted).

Figs. 4-6. *Ebo pepinensis* Gertsch. 4. Male, left palpus, ventral view. 5. Retrolateral view. 6. Female, spermathecae, dorsal view (fertilization tubes omitted). (Scale line 0.1 mm)

**MALE.** Total length  $2.75 \pm 0.18$  mm; carapace  $1.29 \pm 0.07$  mm long and  $1.40 \pm 0.09$  mm wide; femur II  $2.43 \pm 0.14$  mm long (23 specimens). Carapace orange-brown with dark fleckings and a network of dark reticulations from the lateral edges almost to the thoracic groove. Legs with irregular reddish-brown fleckings. Abdomen pale brown with dark cardiac mark and irregular fleckings forming vague chevrons and posterolateral stripes.

Palpal segments with irregular fleckings, as in Figs. 1, 2.

**FEMALE.** Total length  $3.88 \pm 0.43$  mm; carapace  $1.44 \pm 0.12$  mm long and  $1.59 \pm 0.10$  mm wide; femur II  $2.38 \pm 0.10$  mm long (10 specimens). Coloration as in male.

Epigynum typical for the genus. Spermathecae as in Fig. 3; minute, unsclerotized fertilization tubes not drawn.

**RANGE.** Known only from the type locality.

**COMMENTS AND DIAGNOSIS.** *Ebo bucklei* is most similar to *E. pepinensis* Gertsch, but may be distinguished by the characters listed

in the key and illustrated in Figs. 1-6. Mature males of *E. bucklei* have been taken from late May through late July; mature females from late June through early August.

The species is named in honor of Mr. Donald J. Buckle, who first brought it to the author's attention.

#### LITERATURE CITED

SAUER, R. J. AND N. I. PLATNICK.

1972. The crab spider genus *Ebo* (Araneida: Thomisidae) in the United States and Canada. *Can. Ent.* 104: 35-60.